



# GOULBURN

**ARMAGEDDON 180** 2018 STOCK



Rugged and tough on the outside,  
with extreme luxury and comfort on the inside.

Our new Goulburn Armageddon 180 offers real adventure and off-road ruggedness combined with modern comforts. This 18 foot (5.5 meters) van comes with the superior ATX Cruisemaster suspension with a digital display, wireless remote, positive dust extraction system and a compact front loader washing machine.

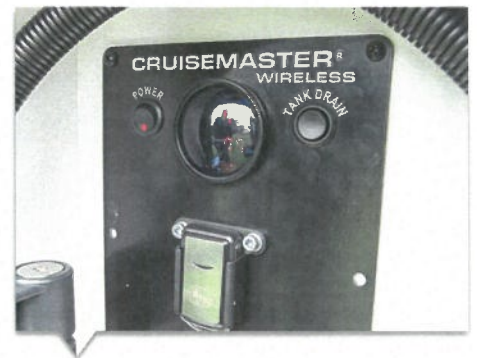
The 144L fridge/freezer combo keeps ample amounts of food fresh, whilst the flip-up and slide-out benchtops in the kitchen give you all the space needed for your food preparation.



**ATX CRUISEMASTER  
AIR BAG SUSPENSION**



**MODERN INTERIOR**



**DIGITAL DISPLAY WITH  
WIRELESS REMOTE**

**FULL OFF-ROAD WARRANTY  
ANY SURFACE IN AUS - NO EXCLUSIONS**

+61 3 9357 9952

[www.elitecaravans.com.au](http://www.elitecaravans.com.au)

[facebook.com/elitecaravans](https://facebook.com/elitecaravans)

# GOULBURN

## ARMAGEDDON 180

2018 STOCK

**YOUR LOCAL DEALER:**



## SPECIFICATIONS:

### CHASSIS FEATURES

- ✓ ALLGAL CHASSIS
- ✓ SINGLE AXLE
- ✓ 2.8T CRUISEMASTER ATX AIRBAG SUSPENSION WITH ANTI-ROLL BAR
- ✓ 12" HYDRAULIC DISC BRAKES
- ✓ 17" ALLOYS MICKEY THOMPSON MTZ TYRES
- ✓ 2 x 95LTR WATER TANKS
- ✓ 1 x 95LTR GREYWATER TANK
- ✓ 2 x 9kg GAS BOTTLES

### INTERNAL FEATURES

- ✓ QUEEN INNERSPRING PILLOWTOP MATTRESS
- ✓ PULL-OUT PANTRY
- ✓ MIRROR ROBE DOORS
- ✓ FIRE EXTINGUISHER
- ✓ TRI-FOLD TABLE IN CAFE DINETTE
- ✓ FLIP-UP BENCH + SLIDE-OUT BENCH IN KITCHEN
- ✓ SOLID SLIDING DOOR TO ENSUITE
- ✓ COLOURS BY ALISA & LYSANDRA

### EXTERNAL FEATURES

- ✓ DOMETIC WINDOWS
- ✓ TYRE INFLATION SYSTEM
- ✓ STUCCO ALUMINIUM
- ✓ CHECKERPLATE FRONT, REAR & SIDES
- ✓ 14FT AWNING
- ✓ 1 x MIDI HATCH + 2 x POWER HATCHES
- ✓ FRONT TUNNEL BOOT
- ✓ FOLD DOWN PICNIC TABLE
- ✓ ROADSIDE SAIL TRACK
- ✓ STONESHIELD D-FLECTOR

### APPLIANCES

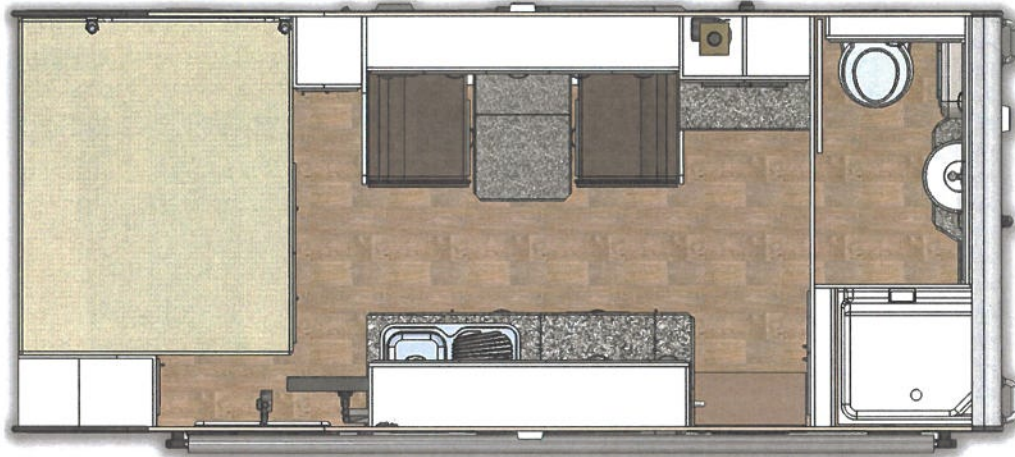
- ✓ 3 GAS/1 ELEC MINIGRILL
- ✓ 12V RANGEHOOD
- ✓ 25 LTR MICROWAVE
- ✓ VITRIFIGO DW180 FRIDGE/FREEZER 144L
- ✓ FUSION 650 AUDIO PACK
- ✓ DOMETIC HARRIER AIRCONDITIONER
- ✓ 28" SMART LED TV IN BEDROOM ON 3-ARM BRACKET
- ✓ DAEWOO 2KG WALL MOUNTED WASHING MACHINE

### ELECTRICAL

- ✓ POSITIVE PRESSURE DUST SYSTEM
- ✓ 4 x HELLA POWERBEAM SPOTLIGHTS
- ✓ 2 x 150W SOLAR PANELS
- ✓ 3 x 120AH FULL RIVER BATTERIES
- ✓ REDARC 30AMP BMS WITH SOLAR REGULATOR
- ✓ ANDERSON PLUG
- ✓ WINEGARD HV ANTENNA
- ✓ EXTERNAL TV BOX
- ✓ EXTERNAL FUSION SPEAKERS
- ✓ DUAL REVERSE CAMERA KIT

### PLUMBING

- ✓ GAS / ELECTRIC HOT WATER SYSTEM
- ✓ FIBREGLOSS SHOWER
- ✓ CERAMIC SWIVEL TOILET
- ✓ COMBO FILTER FLICK MIXER TAP
- ✓ QUICKFILL WATER TANKS
- ✓ TAP ON 'A' FRAME
- ✓ CERAMIC BASIN
- ✓ 12V WATER PUMP
- ✓ STAINLESS STEEL SINK
- ✓ WATER LEVEL MULTIGAUGE
- ✓ EXTERNAL SHOWER



Specifications subject to change without notice, check website for latest specifications. E&OE. © 2017

